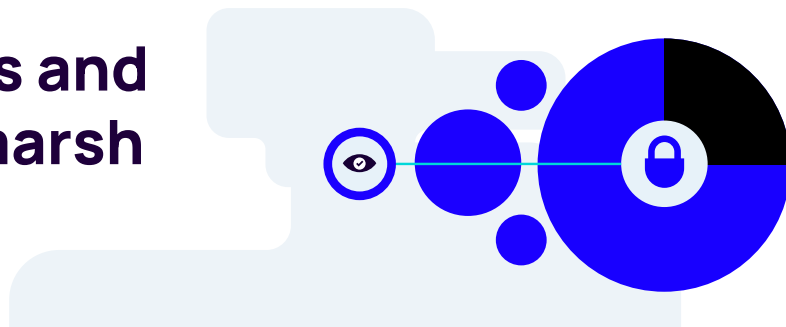


# Cyber Compliance

End-to-end monitoring, remediation and reporting on cyber risk

## Secure your business and mitigate risk with Smarsh Cyber Compliance



### The challenge

Cyberattacks are growing more frequent and sophisticated, while regulators like the SEC and FINRA demand strict compliance with cybersecurity rules.

Small and mid-sized financial firms often rely on a patchwork of vendors, leaving IT teams stretched thin. Managing device security, BYOD risks, apps, and networks separately is inefficient, and one careless employee action can expose risk to the entire organization.

### The solution

Smarsh Cyber Compliance is purpose-built to automate compliance policy enforcement. With this single-pane-of-glass solution, your regulated organization can:

- Monitor and manage the security of employee devices, apps and networks in one central location
- Save valuable time and money complying with — and regularly report on — security standards
- Achieve peace of mind with robust, built-in security features like auto remediation, real-time notifications, risk scoring, an active monitoring agent, and more



**Rely on Smarsh Cyber Compliance to meet your organization's evolving compliance needs.**

# Cyber Compliance

End-to-end monitoring, remediation and reporting on cyber risk

## Key benefits



### Lightweight monitoring of users, devices, vendors and networks

Cyber Compliance is an easy-to-install, lightweight active monitoring application that runs on employees' PCs, Macs and mobile devices.



### Auto-remediation fixes issues in real time

Save time and reduce risk with built-in auto remediation to address OS updates, screen locks, VPN enforcement, and more.



### Check cyber compliance status in a single pane of glass

A comprehensive dashboard includes a risk score and enables you to gain valuable insights from your data with granular analytics features.



### Stay ahead of risk with regulatory reports, event logs, and alerts

Establish policies, conduct virtual audits and even push remediation services to employees' devices when malicious behavior or actors are detected.



### Cover all your bases

Cyber Compliance offers additional security services that can be seamlessly integrated to meet your organization's unique needs.



## Add-on services

- + Vulnerability scans and penetration testing
- + Security awareness and phishing training
- + Third-party vendor risk management